



# i-STAT® TECHNICAL BULLETIN

## i-STAT® CG4+ LARGE THUMBWELL CARTRIDGE

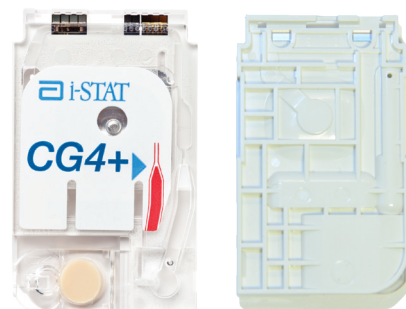
### OVERVIEW

Currently, i-STAT CG4+ Cartridges are available with two different thumbwells. The product is being migrated to the newer cartridge, which contains the larger thumbwell feature.

### GENERAL AND PACKAGING CONSIDERATIONS

The large thumbwell i-STAT CG4+ cartridge **retains the intended use** of the original design. **Its performance characteristics are consistent** with those of the original CG4+ cartridge and should be treated as a new lot number.

- The Abbott List Number for the CG4+ cartridge will change to **03P85-50**.
- Storage and disposal instructions remain unchanged for the redesigned CG4+ cartridge.
- Each box will continue to include 25 cartridges; however, the new box is smaller, helping to decrease storage space requirements.
- The cartridge will continue to be sealed in a foil pouch. The pouch will contain the same information as the original packaging.
- The large thumbwell CG4+ cartridge is **not made with natural rubber latex**.



FRONT

BACK

ORIGINAL THUMBWELL  
CG4+ CARTRIDGE



FRONT

BACK

LARGE THUMBWELL  
CG4+ CARTRIDGE

## NEW FEATURES

---

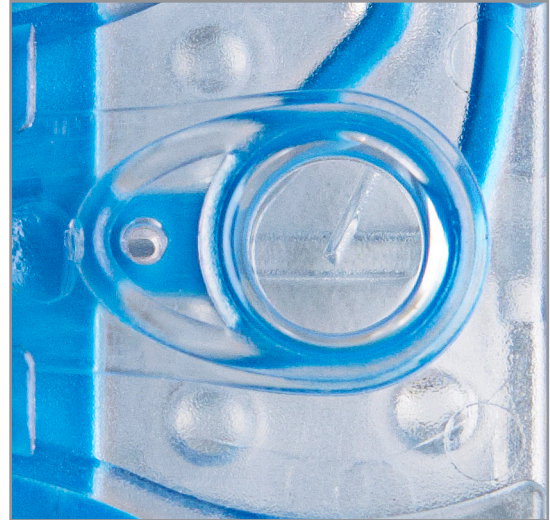
The large thumbwell CG4+ cartridge features enhancements that foster **ease of use**:

---

### HIGH-CONTRAST SAMPLE WELL

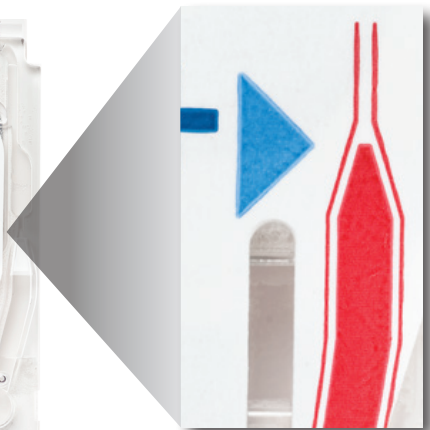


**ORIGINAL SAMPLE WELL**

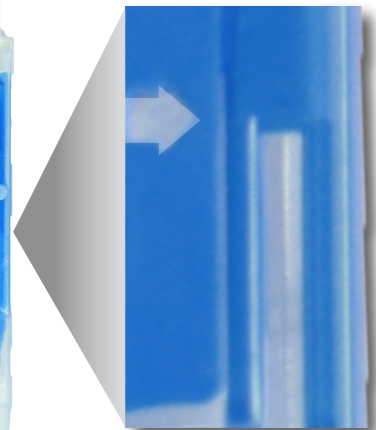


**NEW SAMPLE WELL**

### RELOCATED FILL MARK INDICATOR



**OLD LOCATION OF  
FILL INDICATOR**

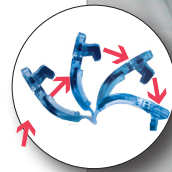


**NEW LOCATION OF  
FILL INDICATOR**

## UPDATED LATCH



**ORIGINAL LATCH**



**NEW LATCH**

## NEW CARTRIDGE THUMBWELL



**NEW THUMBWELL, VISIBLE OUTSIDE OF THE HANDHELD**

## QUESTIONS?



If you have any questions regarding the information in this Technical Bulletin, contact Abbott Point of Care Technical Services.

- By e-mail: [techsvc@apoc.abbott.com](mailto:techsvc@apoc.abbott.com)
- By telephone: 800-366-8020, Option 1

i-STAT is a registered trademark of the Abbott Group of companies in various jurisdictions.