



**Abbott**

OUR MOST ADVANCED  
INSTRUMENT YET

**i-STAT Alinity**



FOR IN VITRO DIAGNOSTIC USE ONLY



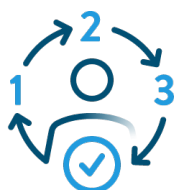
OUR MOST ADVANCED TESTING SOLUTION:

## THE i-STAT ALINITY SYSTEM

DELIVERING REAL-TIME, LAB-QUALITY DIAGNOSTIC RESULTS  
IN AN EASY-TO-USE, PORTABLE INSTRUMENT

- **Built on the proven technology of Abbott's *i-STAT 1 analyzer***, but with a broad range of advanced features, the *i-STAT Alinity* system can help drive even more efficient use of time and resources.
- **The *i-STAT Alinity* system has an award-winning design** and an easy-to-navigate user interface that is more intuitive than ever.
- Now, steps associated with **operator competency and compliance can be largely automated**, lowering the burden for administrators.

i-STAT ALINITY IS DESIGNED FOR



EASY USE



IMPROVED OPERATOR  
COMPETENCY



POLICY  
COMPLIANCE



AN INNOVATIVE INSTRUMENT

# DESIGNED BY YOU, FOR YOU

THE i-STAT ALINITY INSTRUMENT HAS A ROBUST, AWARD-WINNING, USER-FRIENDLY DESIGN

## LARGE HIGH-RESOLUTION, COLOR TOUCH-SCREEN

- Enables simple, intuitive navigation

## EASY-GRIP HANDLING

- Ergonomic design makes use balanced, comfortable and secure

## DURABLE CONSTRUCTION

- Robust construction for fast-paced environments
- Built with materials that can resist damage
- Easy to clean and disinfect

## HIGH-VISIBILITY LIGHT BAR

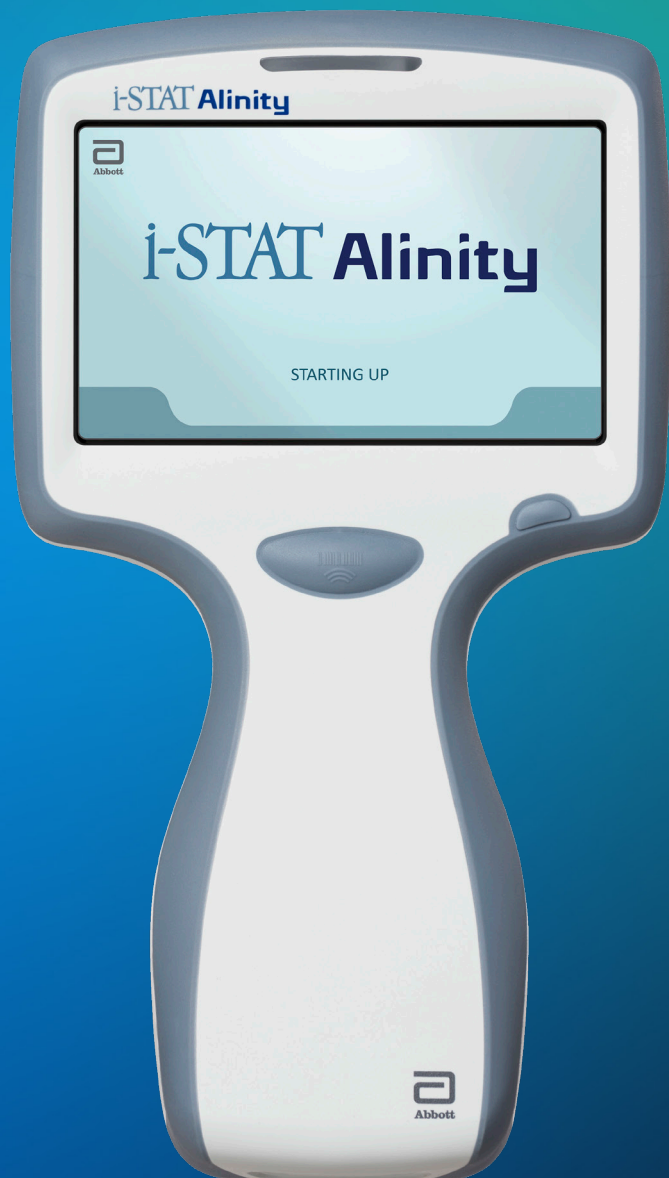
- Signals operator to critical results.

## HIGH-RESOLUTION CAMERA

- Captures 2-D barcodes with picture ID

## EASY-TO-REPLACE, RECHARGEABLE BATTERY

- Always ready to use



This brochure refers to and describes some functions of the *i-STAT Alinity* instrument that may not yet be applicable to *i-STAT* brand test cartridges currently available for use with the *i-STAT Alinity* instrument in the United States. Contact your Abbott *i-STAT* representative for information about *i-STAT* cartridges currently available for use on the *i-STAT Alinity* instrument.

## ADVANCED FEATURES DESIGNED FOR EASIER EVERYDAY TESTING

The *i-STAT Alinity* system makes testing easy for users and administrators, enhancing **care delivery** and improving the **patient experience**.

### RESULT NOTIFICATION WITH AUDIO, COLOR AND LIGHT CUES

Notifies operator of critical information, indicating when results are in specific ranges

### CUSTOMIZABLE RANGE SETTINGS

Capability to customize based on sample type, age and sex when applicable

### ON-SCREEN RESOLUTION ASSISTANCE

Explains reason for failure

### RESULT NOTES

Permits documentation of important patient information

### AUTOMATED DOWNLOAD OF eVAS

Electronic Value Assignment sheet (eVAS) data is transmitted via Abbott-managed server or SDi

### GRAPHICS-DRIVEN, ON-SCREEN HELP

Consistently reinforces proper procedure while performing patient testing



## BUILT-IN FEATURES TO IMPROVE

# OPERATOR COMPETENCY MANAGEMENT

The *i-STAT Alinity* system makes it easy for administrators to maintain user proficiency. Advanced tools support the operator in using the *i-STAT Alinity* system successfully and efficiently.

### OPERATOR CERTIFICATION NOTIFICATION

Notifies operator to re-certify as expiration date of certification approaches

### OPERATOR-INITIATED 'ACCEPT/REJECT'

Requires operator to verify test results before transmission of data

### PRE-RESULT TEST CANCELLATION

Enables operator to cancel test during the test cycle and remove cartridge

### CUSTOMIZABLE CLASSROOM TRAINING SCENARIOS

Facilitates specific scenarios for classroom training

### ON-SCREEN DIRECT OBSERVATION CHECKLIST

Helps administrators remotely communicate training requirements

### USER-DEFINED MESSAGING

Allows administrators to create customized messages

## ENABLE GREATER

# QUALITY CONTROL & COMPLIANCE

RELIABLE FEATURES DRIVE GLOBAL COMPLIANCE AND REINFORCE OVERSIGHT AND CONTROL

- POSITIVE PATIENT IDENTIFICATION (PPID) 2<sup>ND</sup> IDENTIFIER OPTIONS
- RECORDING OF CRITICAL CALL-BACK
- SEAMLESS DELIVERY OF eVAS
- LOT-BASED QUALITY CONTROL (QC)
- CALIBRATION VERIFICATION (CAL / VER) AND LIQUID QC AUTO PASS/FAIL
- CAL / VER AND LIQUID QC SCHEDULE AND LOCKOUT

# CONNECTIVITY TECHNOLOGY

## CONNECTIVITY TO ABBOTT MANAGED SERVER

- Lowers the administrative burden by seamlessly transferring eVAS from the Abbott Managed Server to the instrument
- Avoids unplanned downtime of the instrument by allowing the operator to download updated software from the Abbott Managed Server at their discretion

## WIRELESS AND/OR WIRED CONNECTIVITY OPTIONS

- Allows efficient management of patient data through wireless or wired transmission of data to EMR or data manager

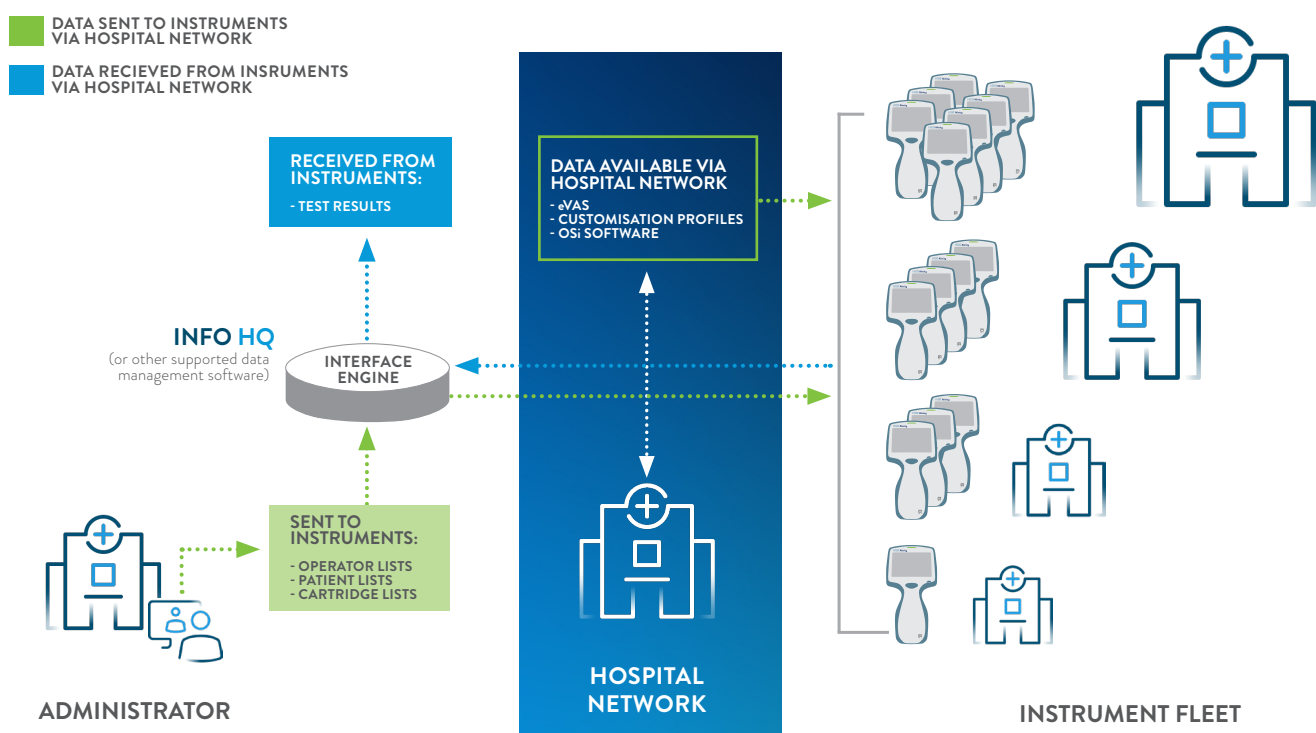
## CYBER SECURITY

- No protected health information, operator information or device logs can be transmitted to the Abbott Managed Server
- Access to software download and installation is limited to approved and authenticated operators

## SECURED APPLICATIONS

- *AlinIQ NCi* is used to configure network settings and runs as a local application behind a secured firewall.
- *AlinIQ CWi* manages customization profiles.

## THE i-STAT ALINITY INSTRUMENT SENDS & RECEIVES DATA VIA YOUR NETWORK







## ONGOING SUPPORT FOR IMPLEMENTATION & USE

Abbott offers a variety of resources to support your use of the *i-STAT Alinity* system, including the assurance of expert assistance whenever needed.

### **QUICK REFERENCE GUIDE (QRG)**

A brief overview of the *i-STAT Alinity* system components, set up and instructions for disinfecting (box, web)

### **SYSTEM OPERATIONS MANUAL (SOM)\***

A comprehensive, detailed document about the entire system (web)

### **VALUE ASSIGNMENT SHEETS FOR QUALITY CONTROL**

**VAS** - downloadable versions for print (web)  
**eVAS**- electronic versions that may be transferred to instruments (web)

i-STAT ALINITY AND OTHER i-STAT SUPPORT RESOURCES ARE AVAILABLE AT  
[WWW.GLOBALPOINTOFCARE.ABBOTT](http://WWW.GLOBALPOINTOFCARE.ABBOTT) OR CONTACT YOUR ABBOTT i-STAT REPRESENTATIVE.

i-STAT TEST CARTRIDGES

# QUALITY BY DESIGN

## QUALITY EMBEDDED IN THE MANUFACTURING PROCESS

Biosensors in single-use test cartridges used with the *i-STAT Alinity* instrument are fabricated with production and process controls embedded throughout the manufacturing process.

A volume of cartridges are tested daily to be sure they meet performance standards for accuracy, precision, and reliability before they leave the factory.

## QUALITY AT THE CARE FACILITY

An onboard quality system within the *i-STAT Alinity* instrument automatically monitors nearly 150 sensor characteristics that may impact the accuracy of results.

If any characteristic falls outside of the expected range, results are rejected by the instrument.

Automated quality controls mean less operator interaction and reduced risk of user error.

# i-STAT Alinity

## EASY

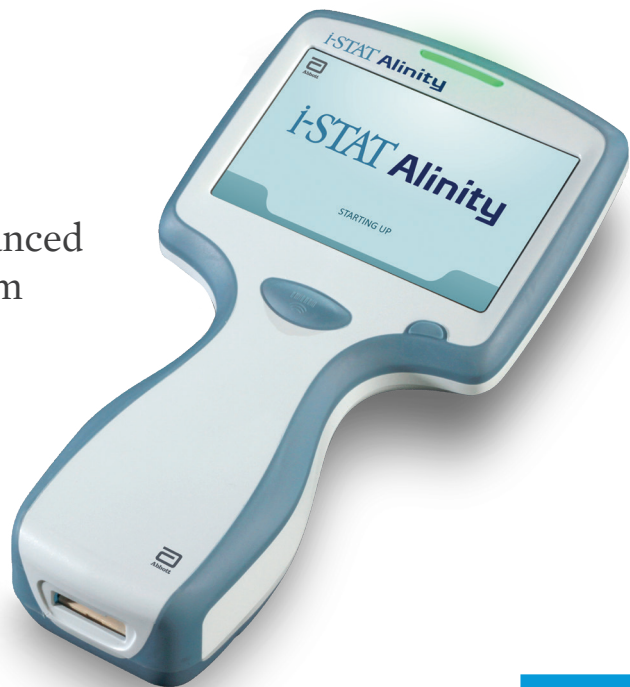
Portable, user-friendly design and advanced features make the *i-STAT Alinity* system easy to use and manage

## ACCURATE

Lab-quality results in minutes

## CONNECTED

Built-in secure technology for remote connectivity



FOR IN VITRO DIAGNOSTIC USE ONLY. THIS MATERIAL IS INTENDED FOR USE ONLY IN THE U.S.

©2024 Abbott. All rights reserved. *i-STAT* and *Alinity* are trademarks of Abbott.

Abbott | Point of Care Diagnostics | 400 College Road East | Princeton, NJ 08540

[www.globalpointofcare.abbott](http://www.globalpointofcare.abbott) i-STAT Alinity Brochure-US 3518.2 05/24

